

SiteAudit Database Setup

In This Article:

- Feature Description
- Setting up the Database

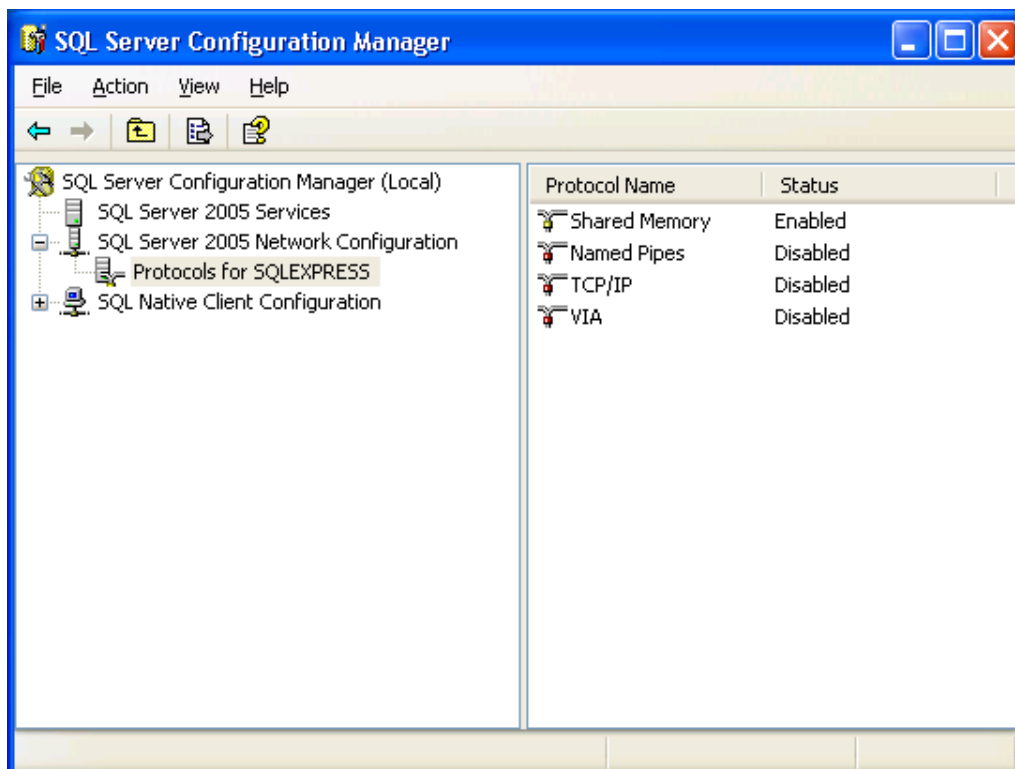
December 2009

SiteAudit uses a database to store monitored data. The database servers supported are Microsoft SQL Server 2005 and 2008 and Microsoft SQL Server 2005 and 2008 Express Editions.

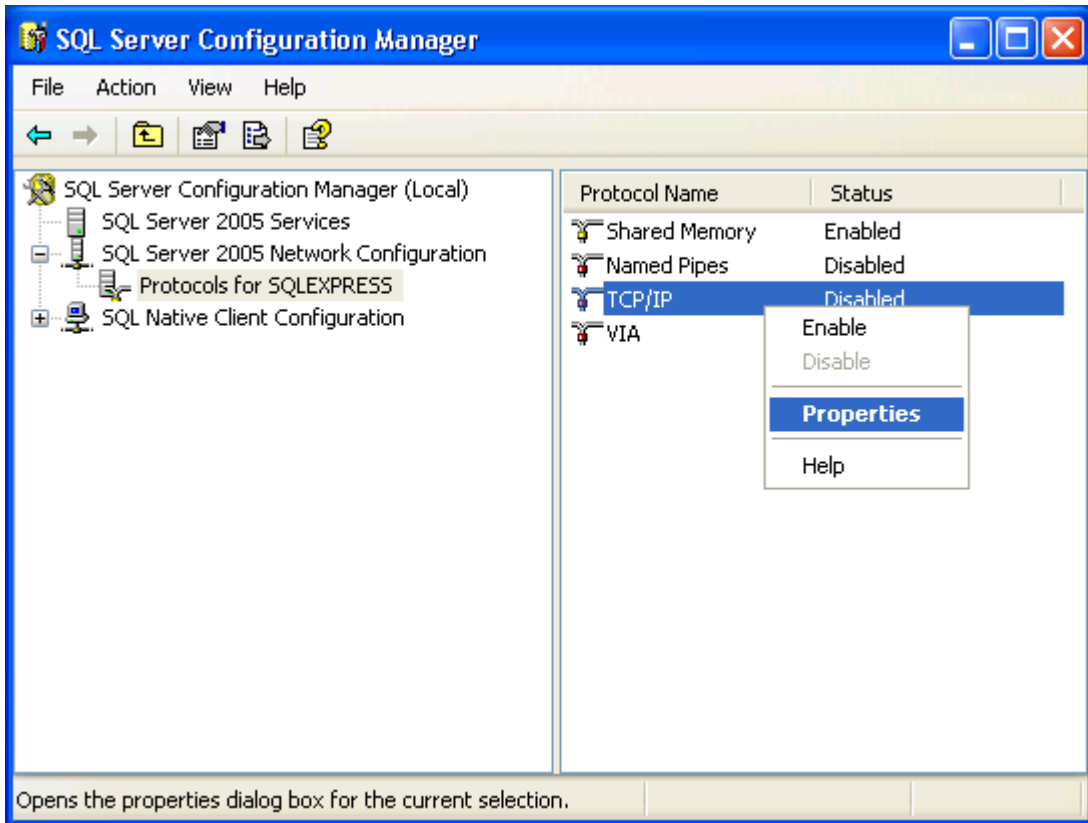
Setting up the Database Server

SiteAudit requires a database server to be setup either on the machine running SiteAudit or a standalone environment. If Microsoft SQL Server Express is being used, it must be installed prior to using SiteAudit. We recommend installing it with the default case insensitivity setting. After SQL Server Express has been installed, it must be configured with a "sa" password and with networking (TCP/IP) since it is disabled by default.

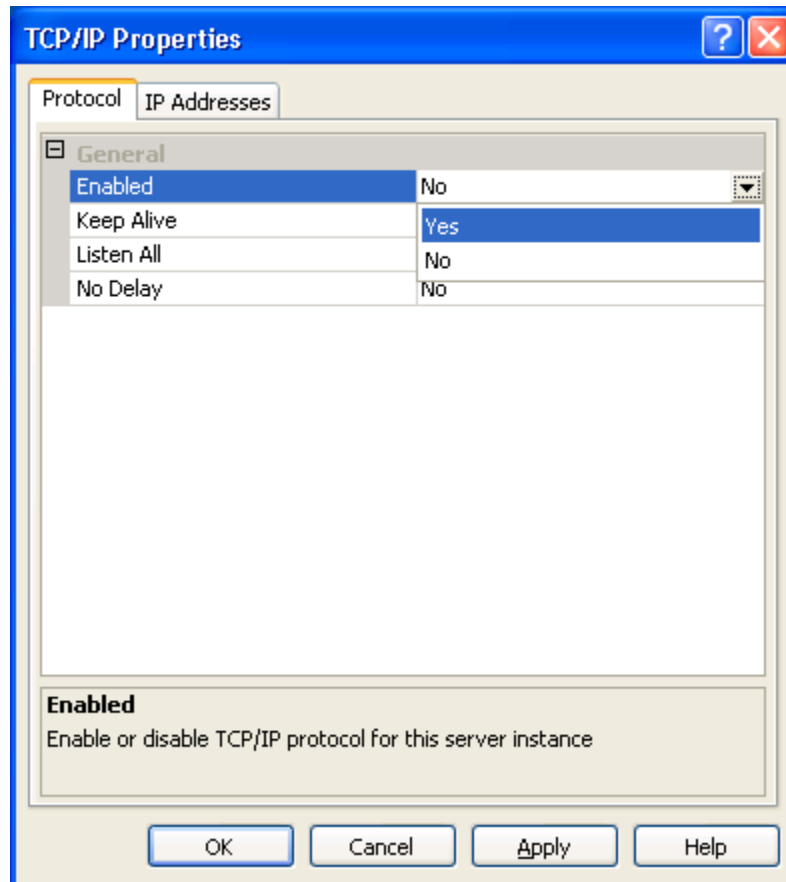
1. From Start -> All Programs -> Microsoft SQL Server -> Configuration Tools run SQL Server Configuration Manager, expand SQL Server Network Configuration, and select Protocols for SQLEXPRESS.



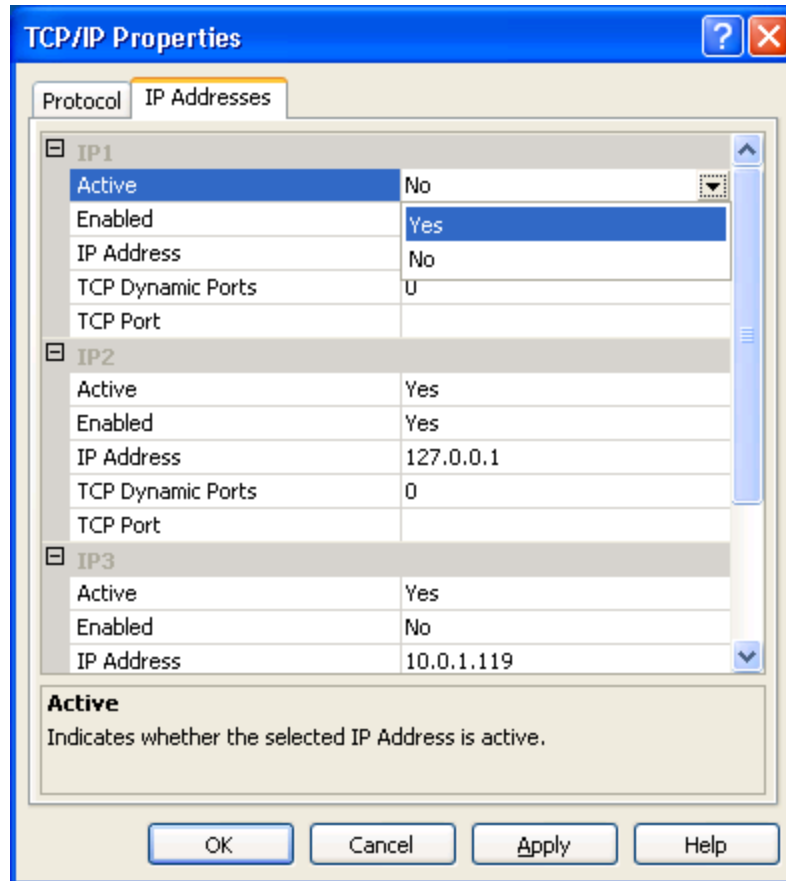
2. Select TCP/IP, right mouse and select **Properties**.



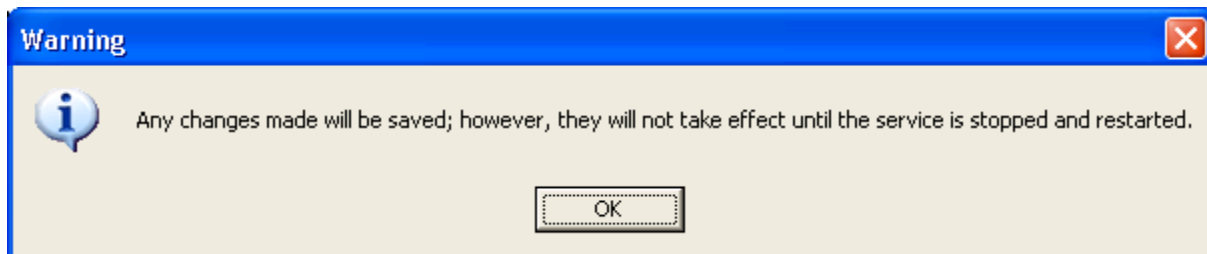
3. On the Protocol tab, select the drop down and change the Enabled option from No to **Yes**.



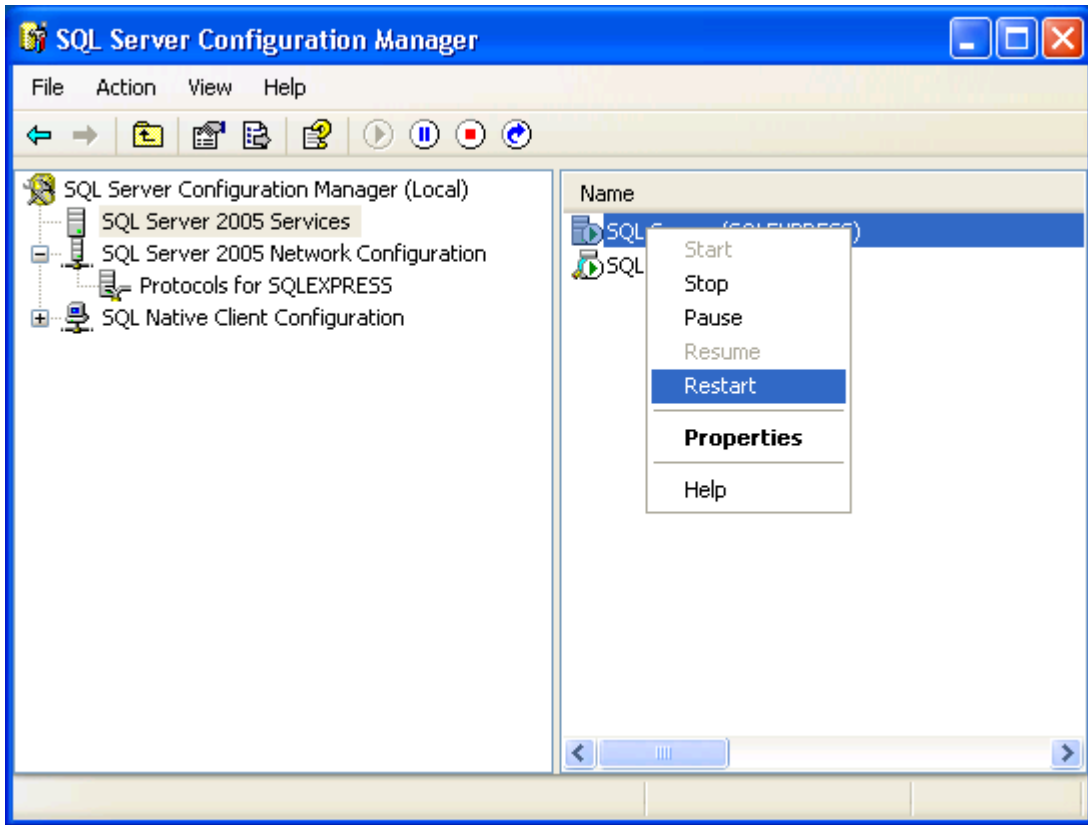
- On the IP Addresses tab, for each of the IP Addresses, select the drop down and change the Enabled option from No to **Yes**.



- Select **Apply**.
- Select **OK**.
- After closing the Properties dialog, the following prompt will appear. Click **OK** to dismiss.



8. Select SQL Server Services in the left pane which will bring up the list of services in the right pane.
9. Select SQL Server (SQLEXPRESS), right mouse and select **Restart**.



After successfully restarting the service, the server is ready for use.

- From the Server dropdown, select the server hosting the database.

Database Configuration

Specify the database for data collection. Other operations such as backing up and restoring a database may also be performed. Additionally, new databases may be created, and users authorized to access the collection database, if server administration credentials are provided.

Server: (local)\SQLExpress

Database: (local)\SQLExpress
qaxpclean\SQLExpress
devsqlserver

Database: DB091125

Access credentials

Use integrated security

User: sa

Password:

Operations

Test Test connectivity and access

Install Install or upgrade the schema

Discard Discard all data other than discovered devices, notification rules, and parameters used for device discovery

Backup Backup the database

Restore Restore the database

OK Cancel

3. Enter the proper credentials for the connection. If connecting to a local database using Windows authentication, select the **Use Integrated Security** checkbox. Otherwise, leave the box unselected and enter the correct username and password.

Database Configuration

Specify the database for data collection. Other operations such as backing up and restoring a database may also be performed. Additionally, new databases may be created, and users authorized to access the collection database, if server administration credentials are provided.

Server: (local)\SQLEXPRESS

Database: DB091211

Access credentials

Use integrated security

User: sa

Password:

Operations

Test Test connectivity and access

Install Install or upgrade the schema

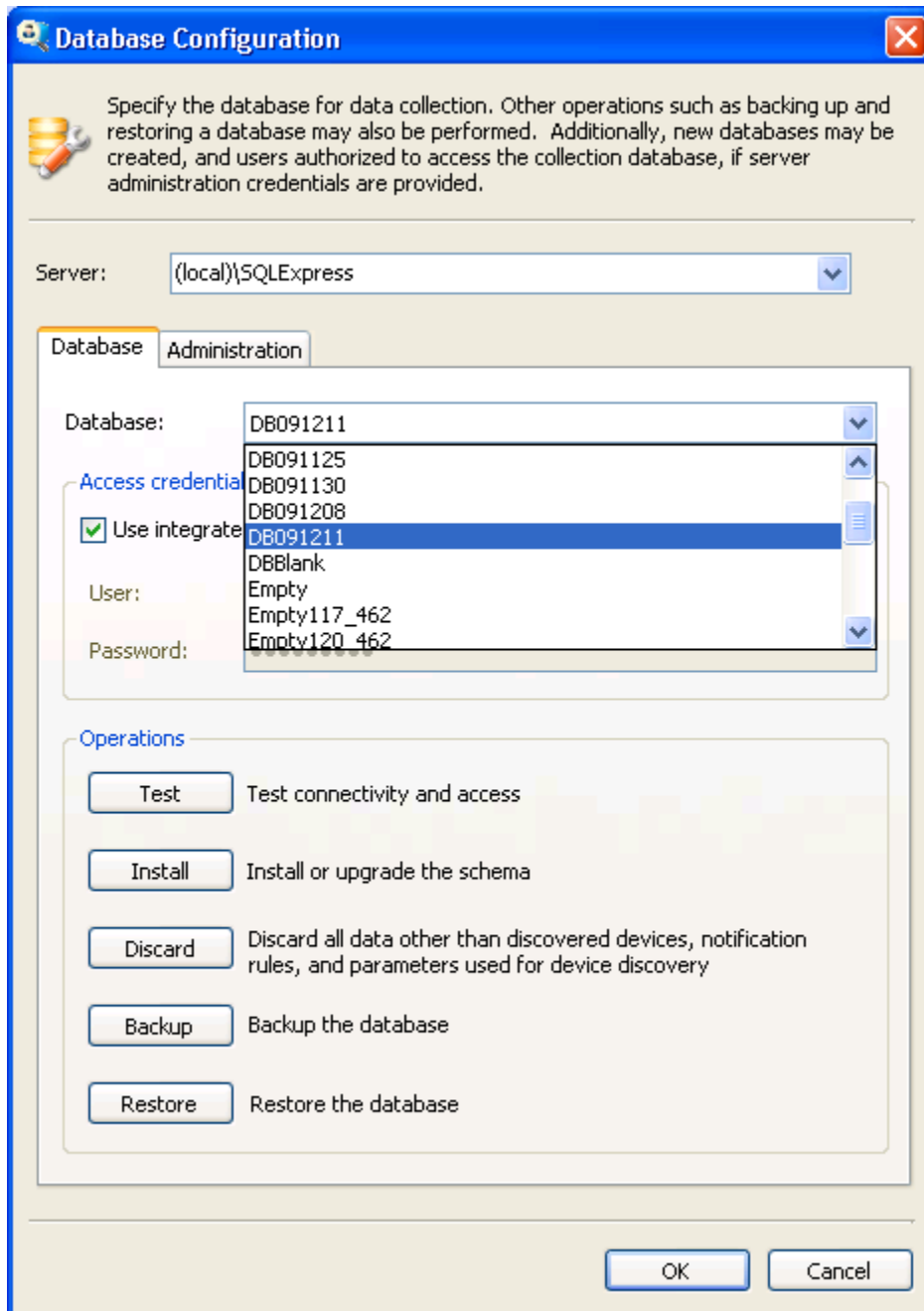
Discard Discard all data other than discovered devices, notification rules, and parameters used for device discovery

Backup Backup the database

Restore Restore the database

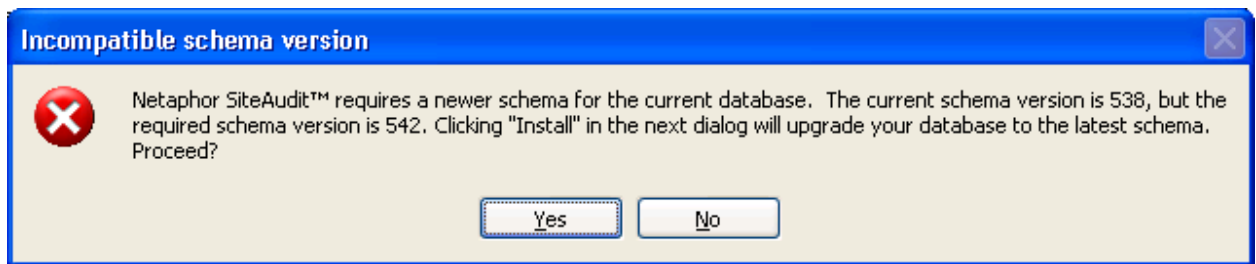
OK Cancel

4. Select the database to be used from the drop down list of the databases.

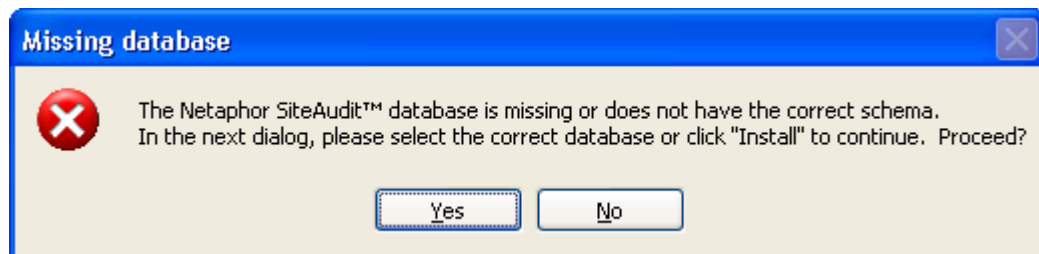


5. Select the **OK** button.

6. If the schema installed is an older schema than the one currently supported by SiteAudit, the following prompt will appear.



7. If the database was not created using SiteAudit, the correct schema will need to be installed, and the following prompt will appear. Click **Yes** to proceed and the Database Configuration dialog will be displayed.

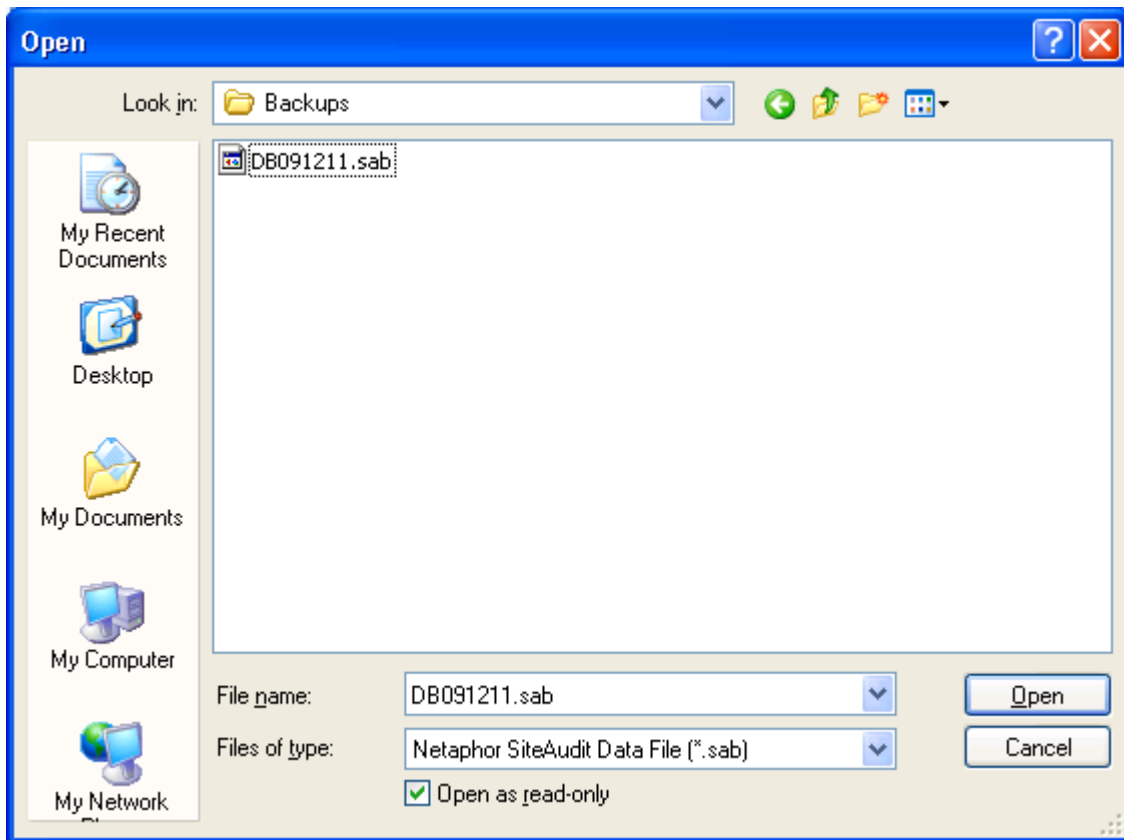


8. Click on the **Install** button in the Database Configuration dialog to upgrade the schema.

Restoring a Database

SiteAudit databases can be restored from SiteAudit backup (.sab) files.

1. From the Database tab, click the Restore button.
2. Locate the .sab file to be restored into the current working database.



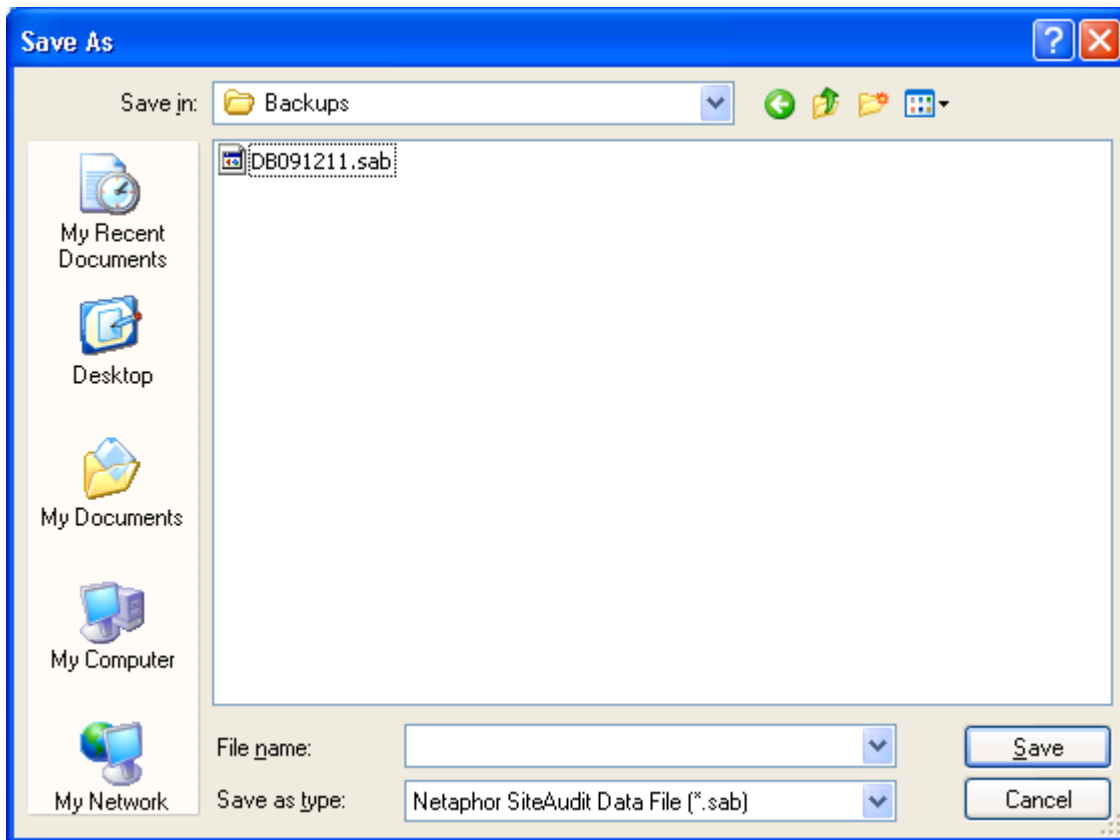
3. Select the file and click **Open** to continue.

Once this process is completed, any previous data will be replaced by the contents of the backup file. The database will be the current schema version being used by SiteAudit.

Backing up a Database

SiteAudit databases can be backed up to SiteAudit backup (.sab) files. This is only recommended for smaller databases or to save configurations.

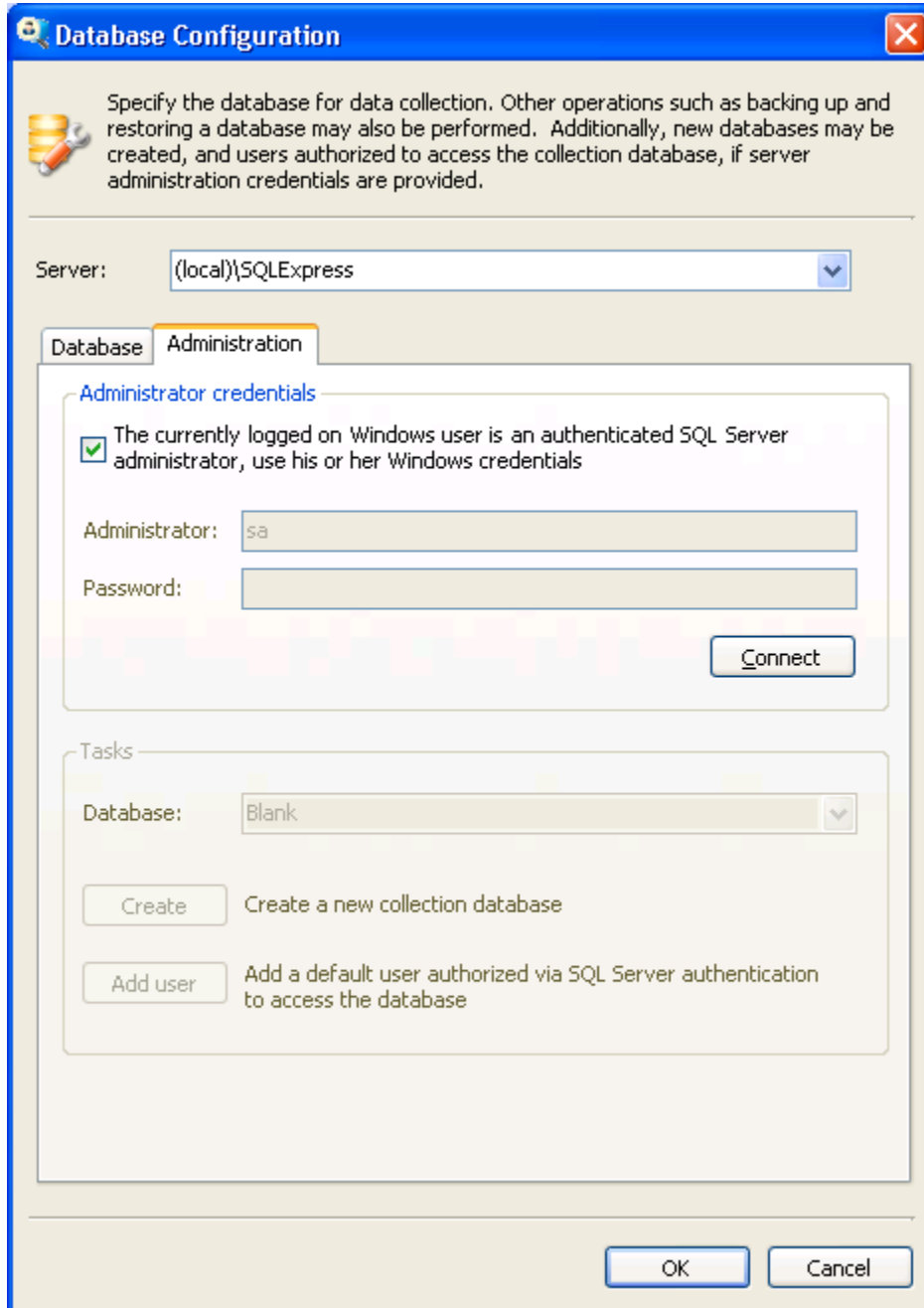
1. From the Database tab, click the Backup button.
2. Select the directory and enter a File name for the backup and click **Save** to continue.



Performing Administrative Functions

To perform administrative functions such as creating a SQL database for use within SiteAudit or adding a user, proper administration credentials must be provided.

1. From the Setup menu select **Database** and then select the **Administration** tab.



The screenshot shows the 'Database Configuration' dialog box with the 'Administration' tab selected. The 'Server' dropdown is set to '(local)\SQLEXPRESS'. Under 'Administrator credentials', the checkbox 'The currently logged on Windows user is an authenticated SQL Server administrator, use his or her Windows credentials' is checked. The 'Administrator' field contains 'sa' and the 'Password' field is empty. A 'Connect' button is present. In the 'Tasks' section, the 'Database' dropdown is set to 'Blank'. There are two buttons: 'Create' (with description 'Create a new collection database') and 'Add user' (with description 'Add a default user authorized via SQL Server authentication to access the database'). 'OK' and 'Cancel' buttons are at the bottom.

2. Prior to performing any administrative functions, the user must first connect by providing the right set of credentials, either by Integrated Security or by entering the credentials. The credentials must be those of an administrator (e.g. "sa") to perform these functions. After providing the credentials the user must connect by clicking on the **Connect** button in order for SiteAudit to be authenticated by the database server.

Creating a Database

1. Connect using administrative credentials if not already logged in.
2. Enter the name of the database in the Database field and click on the **Create** button.

Database Configuration

Specify the database for data collection. Other operations such as backing up and restoring a database may also be performed. Additionally, new databases may be created, and users authorized to access the collection database, if server administration credentials are provided.

Server: (local)\SQLEXPRESS

Administration

Administrator credentials

The currently logged on Windows user is an authenticated SQL Server administrator, use his or her Windows credentials

Administrator: sa

Password:

Log off

Tasks

Database: NewDB

Create Create a new collection database

Add user Add a default user authorized via SQL Server authentication to access the database

OK Cancel

This new database will have SiteAudit's schema installed upon creation and will be ready for use. If using a new database created outside of SiteAudit, the schema will need to be installed before use.

Creating a User

Creation of a default user ("PalmUser") must be performed explicitly by the user and requires "sa" or administrator privileges. The default user need not be created if access through Integrated Security is available. The default user credentials allow the user to select, backup, and restore databases, but not to create databases or add new users.

1. Connect using administrative credentials if not already logged in.
2. To add a default user click on the **Add user** button.
3. Click **OK** to continue.

