

# SiteAudit – Printer Asset Lifecycle Management

## Product Overview

- Discover all networked & direct-connect printers
- Tracks actual print costs by department, location, or by individual printer
- Use multiple cost variables including lease, supplies & service
- Measure utilization by organization, department & location
- Use predefined rules or apply user defined rules to incident notification
- Tracks downtime, service fix time & error frequency
- Track all resolved & unresolved incidents
- Group, sort & filter data from multiple views
- Use standard reports or create custom reports
- Schedule a report for generation & emailing
- Agent-less discovery & data collection without perceptible network traffic
- Microsoft certified

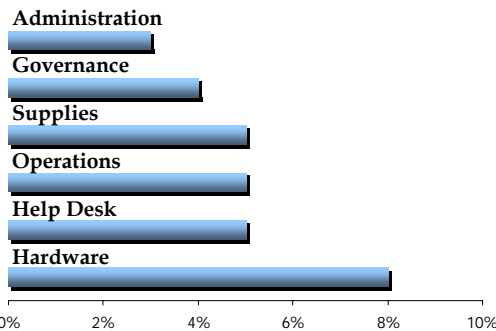
**Company:** Founded in 1997, Netaphor is the global leader in printer asset lifecycle management. SiteAudit, its flagship software, targets medium to enterprise level environments and is licensed through authorized channel partners around the world. Other solutions the company offers include MetaConsole which is an enterprise-level event management solution. It is licensed by major peripheral vendors such as, Quantum, Canon, RISO, KonicaMinolta, Toshiba, Panasonic and other OEM partners. Netaphor is a venture funded company.

*Netaphor SiteAudit™* is the premier printer asset lifecycle management solution. Only by considering a printer's lifecycle can organizations manage costs, improve service and achieve governance over suppliers. [SiteAudit](#) runs as business process software to provide all the data, analytics, notification and reports to do this.

### Managing Cost

To lessen costs SiteAudit provides the data to maximize printer utilization, control lease cost, and avoid print penalties plus much more. It proactively notifies and manages supplies, diminishes help desk call volume and shortens resolution times among other capabilities.

The potential savings from using SiteAudit is understood from numerous case studies to be: hardware (8%), supplies (5%), help desk (5%), operations (5%), administration (3%) and governance (4%).



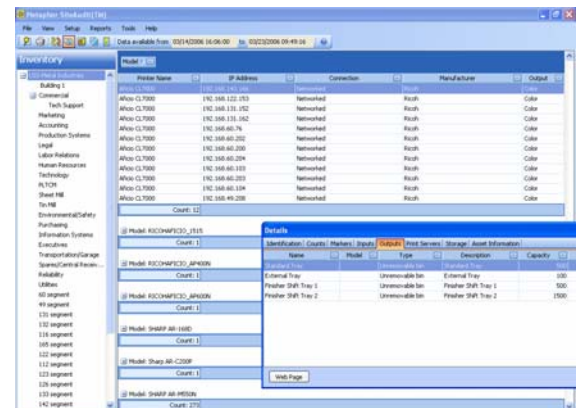
*To estimate your savings ask a Netaphor channel partner about the SiteAudit ROI calculator*

### Improving Service

SiteAudit provides the visibility and tracking capability into service problems so organizations can take the right steps to improve them. For example, it actively tracks the incident resolution time which



can be used to create service level agreements; and it provides downtime and uptime statistics as metrics for tracking service performance. Incident notification helps to dispatch the right service by matching the incident description to the required training level.



*SiteAudit is a complete asset management tool providing printer analytics and reporting capability*

### Providing Agile Governance

To strengthen supplier relationships SiteAudit provides the data and reporting to facilitate oversight. Whether its validating print volumes, measuring service performance or meeting IT control objectives SiteAudit is business process software designed to enable your organization to achieve real governance.

# Product Features

## Specifications

### Installation:

- > Greater than 250 printers: Microsoft Windows 2003 Server or later and Microsoft SQL Server 2005
- > Less than 250 printers: Microsoft XP SP2 & Microsoft SQL Server Express 2005
- > Viewing: Windows XP

### Deployment:

- > Utilizes an agent-less architecture that ensures easy deployment across any size network
- > Scales to the largest enterprises over disparate office locations and networks

### Microsoft Certified:

- > Certified for Windows server & client software

*"SiteAudit is helping us to streamline our printer fleet by eliminating costly printers and providing ongoing data on printer problems that need a quick resolution."*

- Karen Jones, Help Desk Manager, USS-POSCO

Contact a Netaphor partner at [info@netaphor.com](mailto:info@netaphor.com)

## Netaphor SiteAudit

*Printer Asset Management Lifecycle Solution*

### • SiteAudit Applications

- Capacity Planning
- Cost & Accounting Management
- Service & Help Desk Performance
- Supplies Management
- Inventory & Logistics Management
- Service Level Agreement Management

### • Discovery/Data Collection

- Discovers direct-connected & networked printers of all makes and models
- Auto discovery or by networks, by IP range, by device & exclusion capability
- Intelligent, non-invasive data collection with imperceptible network traffic levels
- Collects up to 500 individual pieces of printer data for identification & analysis
- Tracks counts on print (monochrome color), printer supported fax, copy, duplex & paper size data; lifetime counts

### • Analysis/Analytics

- Over 30 service & cost analytics
- Tracks downtime & service fix time
- Tracks resolved & unresolved incidents
- Provides average & sum response times
- Tracks incident frequency
- Provides error description, training level & severity level
- Provides printer utilization; compares direct-connect & networked printer use
- Provides average cost per page

### • Advanced Data Filtering

- Mine data to quickly analyze problems & service performance
- Extract data for special reporting & analysis for management decisions

### • Notification

- Notifies on predefined or user defined incidents via email; provides incident and problem analysis reporting e.g. problem frequency
- Setup notification for internal or external communications
- Set duration intervals between alerts

### • Viewing & Exporting Data

- Organize printers by department, location or other way
- Group, sort, sum, average data in customized views over any time period
- Export to xls, txt, pdf & html formats

### • Report & Scheduling

- Generate inventory, usage, problem & custom management reports
- Standard reports include inventory, low consumables by part number, usage & counts, problem analysis
- Schedule certain reports to generate & automatically email to decision-makers

### • Download SiteAudit today

Click here: [SiteAudit 15-day trial software](#)

